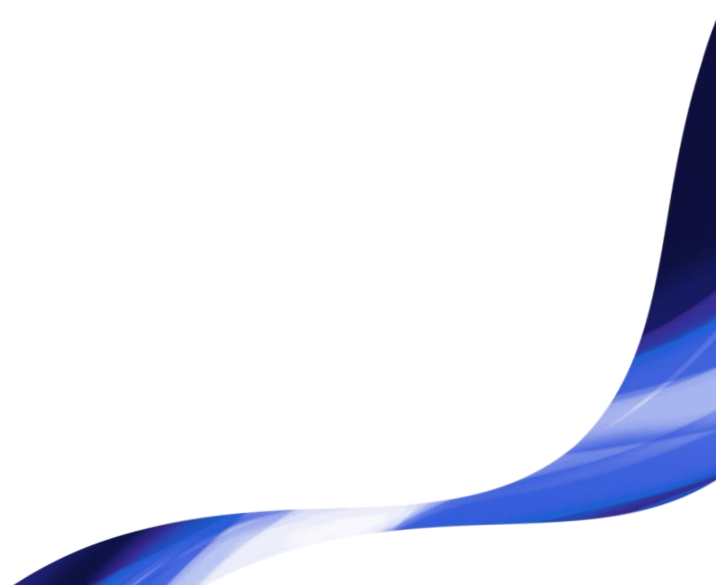




## **Tobii Pro Glasses 3**

Release Notes





## Customer release 2022.3 Beta

### Pro Glasses 3 Controller – desktop

Version number: v1.13.3

Windows

Mac

#### What's New

- Introducing a first Beta version of time stamped events
- Added possibility to create events during and after a recording
- Added a list of events and event markers on the recording timeline
- New icon for privacy settings
- New icon for Glasses settings

#### Resolved Issues

- General stability improvements

### Pro Glasses 3 Controller – mobile

Version number: v1.13.3

Android v1.12.11

#### What's New

- Introducing a first Beta version of time stamped events
- Added possibility to create events during and after a recording
- Added a list of events and event markers on the recording timeline
- New icon for privacy settings
- New icon for Glasses settings

#### Resolved Issues

- General stability improvements

### Pro Glasses 3 - Firmware

Version number 1.28.1

#### What's New

- Improved eye tracking performance



## Resolved Issues

- Reduced the risk of dropped gaze samples due to CPU overload by optimizing the CPU processing.
- General stability improvements

## Customer release 2022.2

### Pro Glasses 3 Controller – desktop

Version number:

Windows v1.12.11

Mac v1.12.11

#### What's New

- Collection of anonymous usage data statistics. This helps Tobii to understand how the product is being used and helps us improve it.
- Option to turn off sharing of anonymous usage statistics in settings
- UI improvements
  - A warning message is shown when head unit is disconnected
  - It is now possible to switch recording mode from the new recording dialog
  - Improved UI for Glasses selection (for users with one pair of Glasses)
  - Improved UI for Cable (direct) dialog

## Resolved Issues

- General stability improvements

### Pro Glasses 3 Controller – mobile

Version number:

Android v1.12.11

#### What's New

- Collection of anonymous usage data statistics. This helps Tobii to understand how the product is being used and helps us improve it.
- Option to turn off sharing of anonymous usage statistics in settings
- UI improvements
  - A warning message is shown when head unit is disconnected
  - It is now possible to switch recording mode from the new recording dialog
  - Improved UI for Glasses selection (for users with one pair of Glasses)
  - Improved UI for Cable (direct) dialog



## Resolved Issues

- General stability improvements

### **Pro Glasses 3 - Firmware**

Version number 1.28.1

#### What's New

- Improved eye tracking performance

#### Resolved Issues

- Reduced the risk of dropped gaze samples due to CPU overload by optimizing the CPU processing.
- General stability improvements

## **Customer release 2022.1**

### **Pro Glasses 3 Controller – desktop**

Version number:

Windows v1.11.6

Mac v1.11.6

#### What's New

- Download recordings with gaze overlay to your device. (Only available for recordings made in “video mode”)
- Leave feedback about your experience with Tobii Pro Glasses 3 directly from the application.
- Support for Windows 11

#### Resolved Issues

- General stability improvements

### **Pro Glasses 3 Controller – mobile**

Version number:

Android v1.11.6

#### What's New

- Download recordings with gaze overlay to your device. (Only available for recordings made in “video mode”)



- Leave feedback about your experience with Tobii Pro Glasses 3 directly from the application.
- Support for Android 12

#### Resolved Issues

- General stability improvements

### Pro Glasses 3 - Firmware

Version number 1.26

#### What's New

- Improved eye tracking algorithm that improves the performance in general and in scenarios that generates smaller pupil sizes in particular.
- Improvement to 100Hz mode computation that reduces frame-to-frame jitter in the data output.

#### Resolved Issues

- General stability improvements

## Customer release 2021.4

### Pro Glasses 3 Controller – desktop

Version number:

Windows v1.9.4

Mac v1.9.4

#### What's New

- It is now possible to change the language in the Controller application to Japanese and Chinese
- Participant audio is now available in live view and can be toggled on and off

#### Resolved Issues

- Fixed a bug where Controller showed wrong SD card time when exceeding 24 hours.

### Pro Glasses 3 Controller – mobile

Version number:

Android v1.9.4

#### What's New



- It is now possible to change the language in the Controller application to Japanese and Chinese
- Participant audio is now available in live view and can be toggled on and off

#### Resolved Issues

- Fixed a bug where Controller showed wrong SD card time when exceeding 24 hours.

### Pro Glasses 3 - Firmware

Version number 1.23.1

#### Resolved Issues

- Fixed a bug that could cause Video Mode recordings to look choppy when streaming over Wi-Fi
- General stability improvements

## Customer release 2021.3

### Pro Glasses 3 - Firmware

Version number 1.21.2

#### What's New

- Significant improvements to eye tracking performance and stability
- Glasses 3 now automatically reconnects to the latest used Wi-Fi after reboot

#### Resolved Issues

- General stability improvements and minor bug fixes
- On Windows, Glasses 3 Access Point now only prompts for password instead of pin.

### Pro Glasses 3 API

#### Resolved Issues

- Fixed issue where invalid handling of WebRTC "start" action and deleting a WebRTC-object immediately after creating it caused crashes.
- Default Access Point and Wi-Fi configuration cannot be deleted anymore

## Customer release 2021.2



## Pro Glasses 3 Controller – desktop

Version number:

Windows v1.7.4

Mac v1.7.4

### What's New

- Introducing a new recording mode that directly saves video with gaze overlay to SD-card. Please note: Recordings in the new video mode are not compatible with Tobii Pro Lab or other analysis software.
- Audio feedback for successful and failed calibration
- Introducing Mac support (macOS Big Sur)

## Pro Glasses 3 Controller – mobile

Version number:

Android v1.7.3

### What's New

- Introducing a new recording mode that directly saves video with gaze overlay to SD-card. Please note: Recordings in the new video mode are not compatible with Tobii Pro Lab or other analysis software.
- Audio feedback for successful and failed calibration

# Customer release 2021.1

## Pro Glasses 3 Controller – desktop

Version number:

Windows v1.5.9

### What's New

- Pro Glasses 3 can now be connected directly through an ethernet cable to a Windows computer.

### Improvements

- Improved UI for recording info dialogue.

### Resolved Issues

- Fixed a bug where the calibration button was available for disconnected Pro Glasses 3.



## Pro Glasses 3 Controller - mobile

Version number:

Android v1.5.7

### Improvements

- Improved UI for recording info dialogue.

### Resolved Issues

- Fixed a bug where the calibration button was available for disconnected Pro Glasses 3.
- Fixed a bug where volume and timeline sliders were not draggable in replay.
- Fixed a bug where the stop recording button in portrait mode had too large area.

## Pro Glasses 3 - firmware

Version number 1.14.3

### Resolved Issues

- Previous firmware versions had a bug where a failed calibration could be reported as successful.
- Calibration timeout causing failed calibration.
- Calibration failure sometimes caused Pro Glasses 3 to disconnect.

## Pro Glasses 3 API

### What's New

- Gaze overlay in video can now be drawn directly onto the video (both live streamed and saved recording). It is toggled with property in /settings/gaze-overlay.
- Direct connection with ethernet cable between Windows computer and Pro Glasses 3 is now supported.
- Wi-Fi channel for the access point (AP) can now be changed via a property in the API.

### Improved

- Frequency changes are now integer values instead of strings containing "100hz", "50hz" and "default" as string values.
- Wi-Fi parameters found under Wi-Fi settings no longer contain default values.
- API can now handle object calling invalid action.
- Possible to set NTP through DHCP servers



